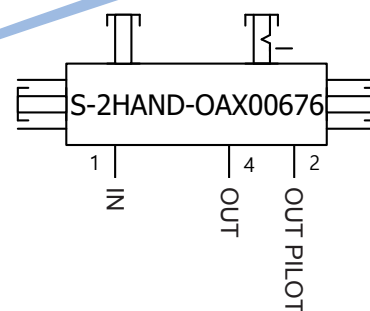


## Two-hand control panel S-2HAND-OAX00676

- purely pneumatical
- easy installation
- safe direction (SDI) cat.1 PL c according to EN ISO 13849
- low tubing effort
- meets the requirements of the standard EN 574
- stand for the two-hand console optionally available
- strong plastic housing
- flow rate up to max. 1400 NI/min
- suitable for the local binding of a person
- CE certified
- compressed air failure and return does not lead to any dangerous movement
- integrated emergency stop

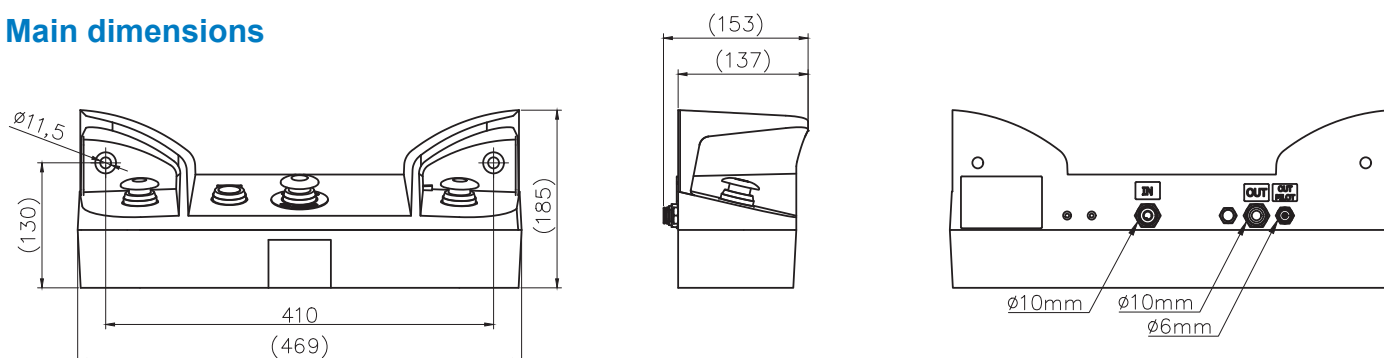


When the two buttons are pressed simultaneously a pneumatic signal is present at the output. As soon as one or both buttons are released the signal will be lost. The two-hand control panel is additionally equipped with an emergency stop button for venting in case of emergency. The restart function eliminates potential hazards due to energy failure and energy recovery. This safety component meets the requirements of EN 574:2008.

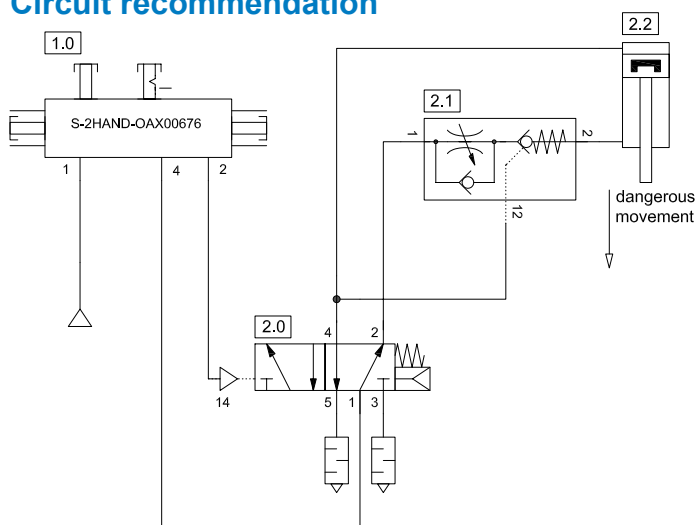
## Technical specifications

|  |                             |
|--|-----------------------------|
| Total weight   | 2.9 kg                      |
| Housing material   | Plastic                     |
| Supply (IN) / Supply air outlet (OUT) / Pilot air outlet (OUT PILOT) | Ø 10 mm / Ø 10 mm / Ø 6 mm  |
| Medium   | Compressed air              |
| Pressure range   | 0.25 to 1.0 MPa             |
| Max. air flow  | 1400 NI/min                 |
| Ambient temperature  | -5° C (non-freeze) to 50° C |
| Type according to EN 574:2008  | III A                       |
| Max. achievable performance level according to EN ISO 13849-1        | c                           |
| Response time  | 0.5 s                       |

## Main dimensions



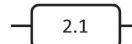
## Circuit recommendation



Two-hand control: safe direction up to max. category 1, PLc



Safe stopping and closing in case of pressure loss up to max. category 1, PLc



Components 2.0, 2.1 and 2.2 are not included at the delivery.

## Components for 2.0

- EVSA7-6-FG-S-2 + single connection plate
- EVS7-1-A02F single connection plate G1/4
- EVS7-1-A03F single connection plate G3/8
- VFA3130-02F
- VFA5120-03F

## Components for 2.1

